

Civil CAD CONSULTANT

Express-TIP

On the Side

Q: Is there any way to stay in the tracking command when you change active alignments?

A: No, but there's a great trick to track a non-active alignment if that helps. Choose **Tools > Tracking > Horizontal Alignment Tracking**. Note the tracking always defaults to the active alignment. Now, hold down your **<Ctrl>** key and click near another alignment. Presto! You're now tracking a non-active alignment.

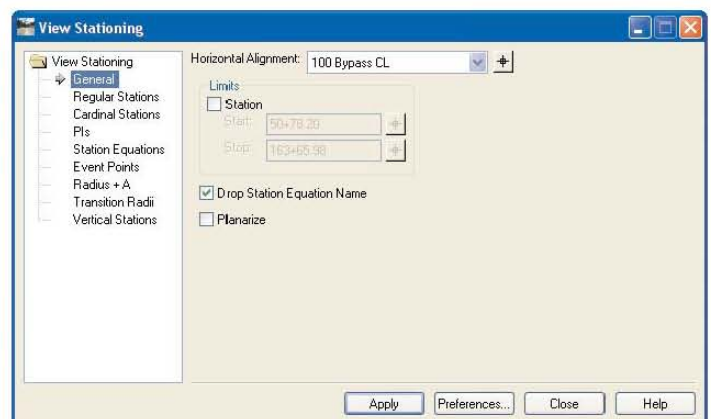
Civil CAD Consultant is an independent publication produced by CAD Productivity Incorporated ©2010

New with SS1

Automatically update your Stations

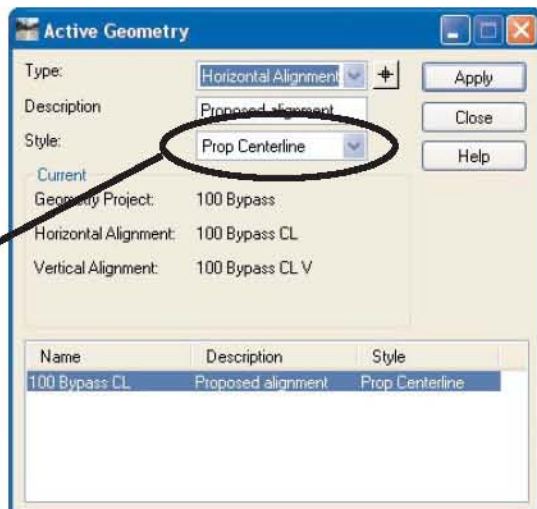
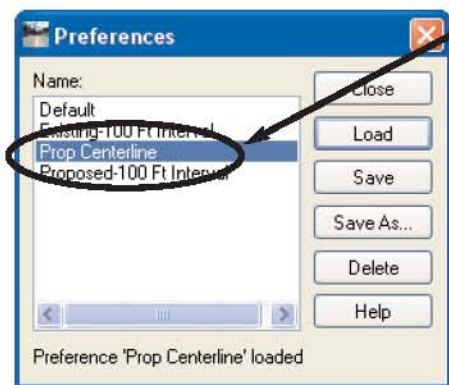
Beginning with the V8i SS1 version of InRoads, there is a new option to have stationing automatically placed or updated when creating and/or modifying an alignment. In order to use this option, you must have a preference in the **Stationing** command whose name matches the **Style** assigned to the alignment.

1 Choose **Geometry > View Geometry > Stationing**.

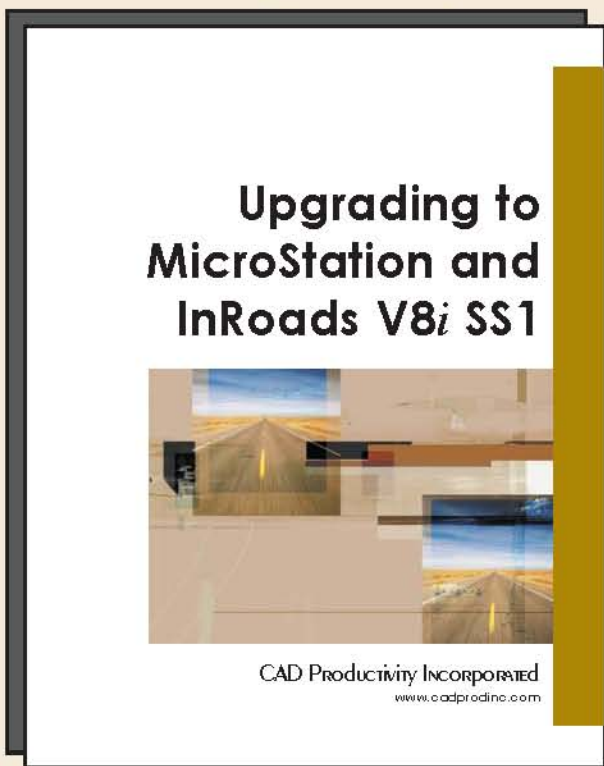


2 Choose Preferences and Load the preference for the stationing you desire.

3 Choose Preferences > Save As and enter the name of the Style assigned to the alignment.



Our Upgrading classes have already helped more than 150 users get ready for MicroStation and InRoads V8i ss1



Changes to the User Interface

Enhancements to Text

NEW DESIGN CRITERIA

GEO-COORDINATION TOOLS

Metes and Bounds

Value Equations in Templates

Automatic Update of Design Changes

Bentley Map

Civil AccuDraw

Civil Geometry

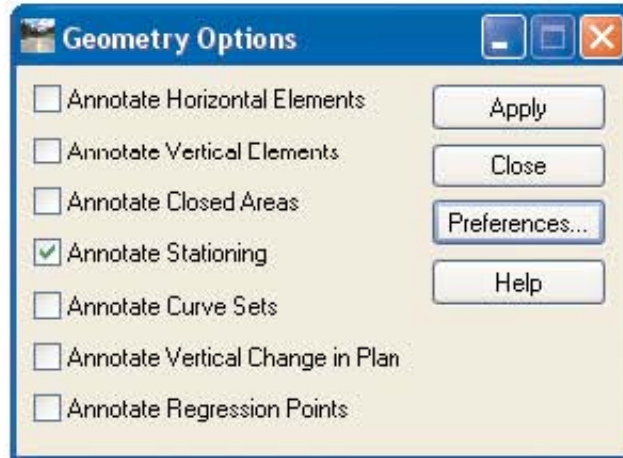
Working with Shape Files

Are you ready?

Post Office Box 281195 ■ Nashville, TN 37228 ■ 615.255.7441 ■ www.cadprodinc.com

4

Choose **Geometry > View Geometry > Options**.



Toggle on **Stationing**.

Note: If you want automatic stationing to be the default, **Save** the preference. If you're using an XIN from the XM version, you will have to create the preference with a **Save As**.

Also note the other auto-annotate options. They are very similar in function and also require preferences in their respective commands with the same name as the alignment's style.

Close the **Options** dialog.

Now, as you make changes the stationing automatically updates. If you create a new alignment with the same Style, it will be automatically stationing as it is created. 