

Civil CAD CONSULTANT

Express-TIP

On the Side

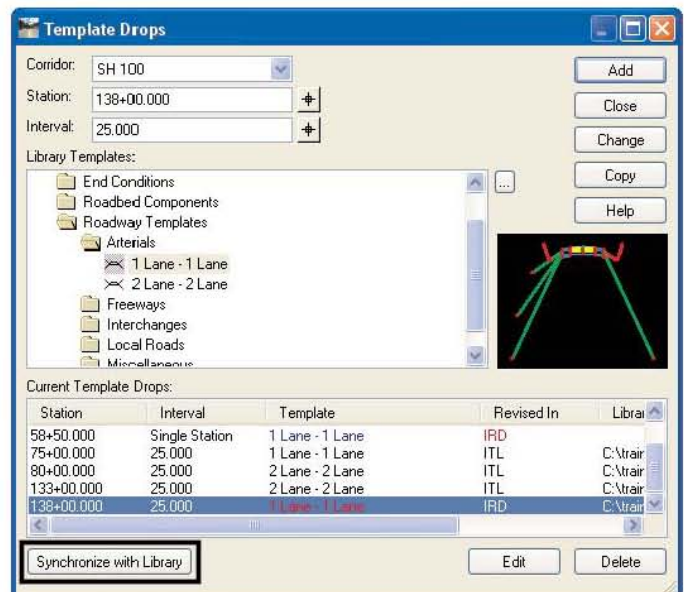
Q: When working with **Template Drops**, the **target button for the Station only** allows me to choose **Critical Stations and template interval stations from within Roadway Designer**. What if I want to snap to something in the design file?

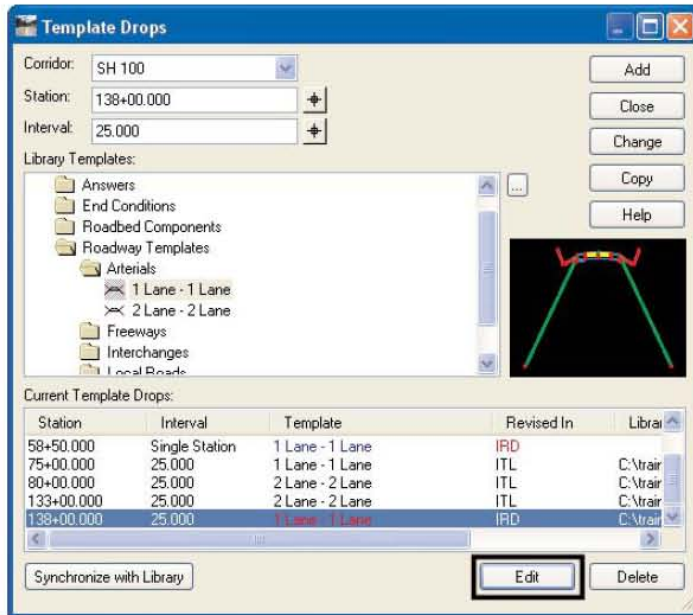
A: Within **Roadway Designer**, most of the station locations that have target buttons allow you to access the **MicroStation view** and select stationing from there by holding down your **<CTRL>** key when you choose the target button.

Civil CAD Consultant is an independent publication produced by CAD Productivity Incorporated ©2009

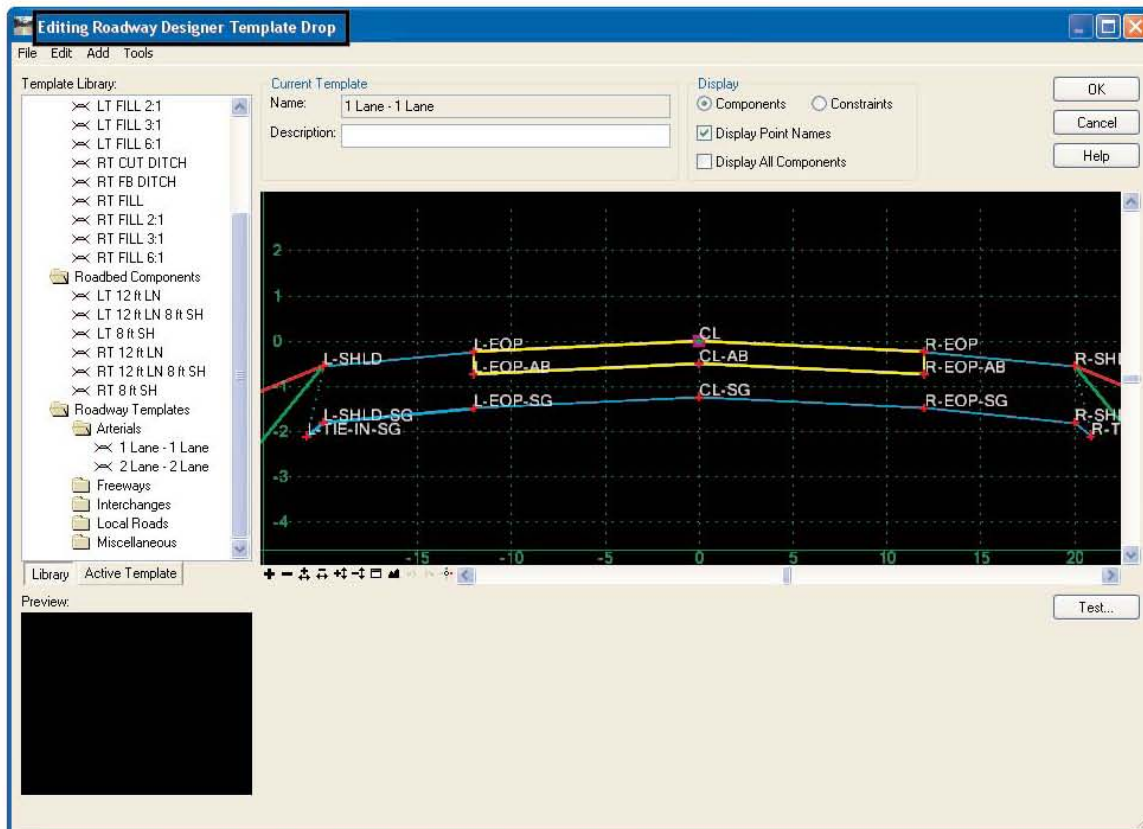
Roadway Designer Editing templates in the IRD

When you add templates in the **Template Drops** dialog, you are actually creating a copy of the template in the **Roadway Designer** file (IRD). Because of this, when you make changes to the templates in the template library (ITL), they are not automatically reflected in the design. When you return to the **Template Drops** dialog after making changes, you will notice that the template names are red and you must highlight the template and choose **Synchronize with Library** to have the modified template copied into the IRD.



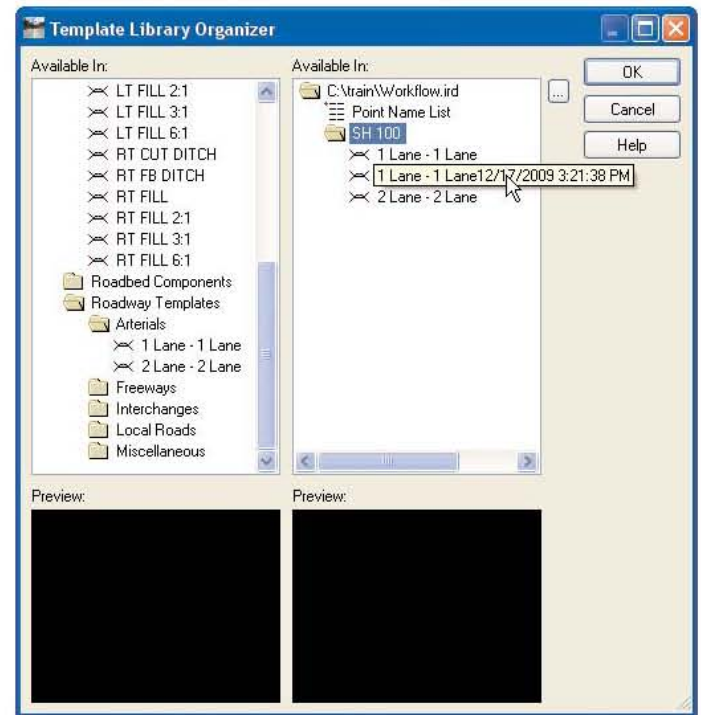


You may have noticed the **Edit** button at the bottom of the **Template Drops** dialog. Highlighting a template entry and choosing this button takes you into the template editor for that one entry. All the standard template editing functionality is available, including dragging and dropping from the currently loaded template library. The resulting modified template is used from that station until another template drop is encountered, but other entries using that same template are not affected. This is possible because when the template is edited, another copy is made of the template within the IRD.




If, after making the changes to one entry, you want to use the modified template elsewhere, it can be copied back into a template library.

- 1** Save the IRD file after the template edit is complete.
- 2** Open the **Create Template** dialog.
- 3** Select **Tools > Template Library Organizer**.
 - Choose the browse button.
 - Change the **Files of Type** to **Roadway Design (*.ird)**.
 - Open the IRD where the template was modified.



Templates in the IRD are organized by corridor, and named according to the original template name appended with the date and time of modification.

- 4** Select the modified template and drag it into the appropriate folder in the template library.
- 5** Select OK when done and save the ITL.

The modified template has now been copied into the ITL and can be used elsewhere in the corridor or in other corridors as needed. 

Attention **MicroStation and InRoads Users!**

**FREE
Tips & Tricks.
Register
today!**

Civil CAD CONSULTANT

The information source for InRoads users is back and you're looking at it! Go online and register now so you won't miss an issue.

MicroStation and InRoads training

From Basic MicroStation to Advanced InRoads, we're here to help you become more productive with your investment. Visit our website for more information on the classes we offer.

**Upgrade
your
brain**

www.cadprodinc.com